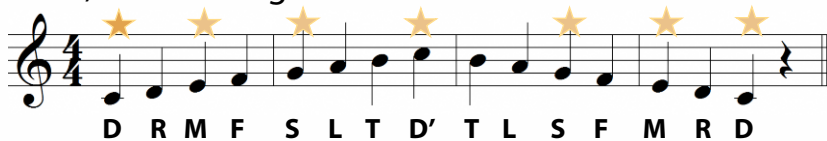
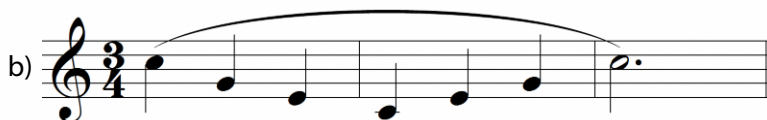
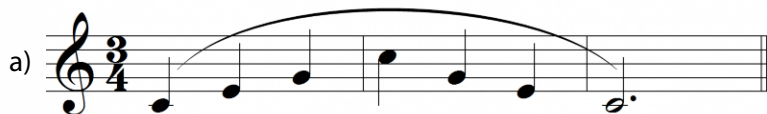


An **arpeggio** is a broken chord made up of the first, third, fifth and eighth notes of a scale.



# AWESOME ARPEGGIOS

1. Sing the arpeggios *slowly* using:



- a) Tonic sol-fa
- b) Note names
- c) Vowel sounds

2. Sing the arpeggio using the following using:



- a) a very slow tempo (lento)
- b) a moderate tempo (andante)
- c) a fast tempo (allegro)
- d) a very fast tempo (presto)

## ARPEGGIO CHALLENGE!

3. Sing the following arpeggios.



### BONUS QUESTIONS:

Look at the arpeggio exercises.  
Can you find the following music symbols?

- a) A fermata
- b) A repeat sign
- c) Articulation markings
- d) Time signature
- e) A treble clef
- f) Dynamic markings
- g) Bar lines

