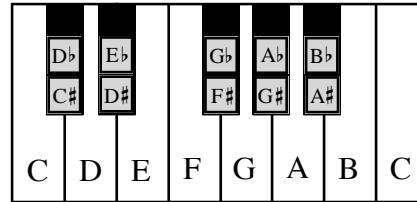


# Enharmonic Notes I

In music there are many notes that have more than one name.  
**Enharmonic** notes sound the same but are spelled differently.

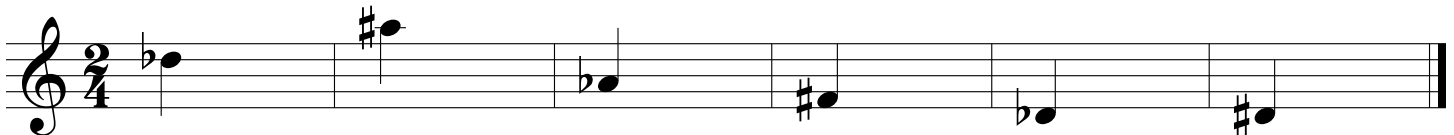


If you look at a piano keyboard you will see that D $\sharp$  and E $\flat$  are played with the same key.

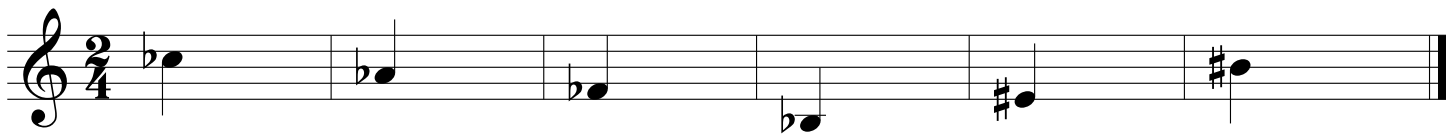
1. Use a quarter note to write in the enharmonic equivalent of the given note.



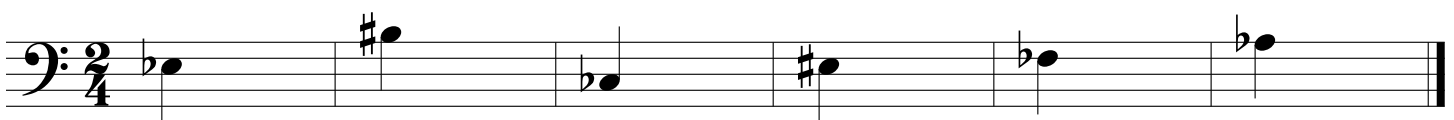
2. Use a quarter note to write in the enharmonic equivalent of the given note.



3. Use a quarter note to write in the enharmonic equivalent of the given note.



4. Use a quarter note to write in the enharmonic equivalent of the given note.



5. This is the first part of a familiar song written with many enharmonic notes.

Identify the song and write the name here: \_\_\_\_\_

